

## AQUATUB-Rw

### PE-HD Storm Water Sewer Pipe in Sewers with Storage Capacity

#### AQUATUB-Rw storm water sewer system Twin wall pipe in nominal sizes up to DN 800

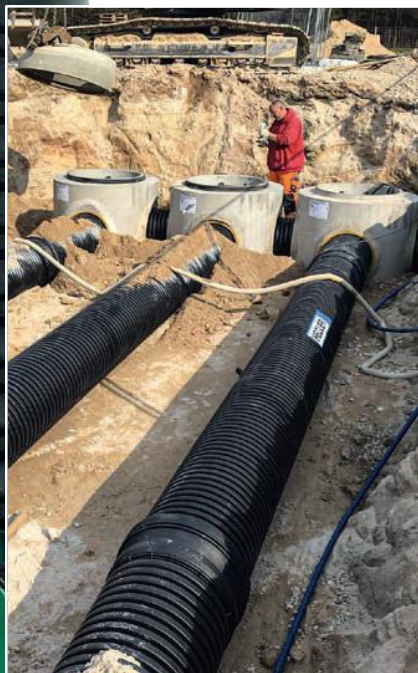
- Simple and economic solution for high storage/retaining capacities
- Practical fittings for inlet and outlet connections
- Excellent long-term properties thanks to PE-HD
- Ring stiffness of  $S \geq 8.0 \text{ kN/m}^2$  in accordance with DIN EN ISO 9969
- Suitable for SLW 60 classified roads
- PE-HD twin wall pipe, inside smooth/outside corrugated
- Leak-tight up to 0.5 bar in accordance with DIN EN ISO 13259/DIN EN 1610
- Resistant to temperatures from  $-40 \text{ }^\circ\text{C}$  to  $+80 \text{ }^\circ\text{C}$







AQUATUB-Rw DN 600 in combination with the MULTI-inspect MONO chamber system



AQUATUB-Rw DN 500 with concrete distribution manholes

### AQUATUB-Rw sewer with storage capacity from PE-HD

In building projects where professional discharge or local infiltration of the surface water is not possible, extensive structure work becomes necessary for temporary storage in a retention reservoir. Such structures being highly complex and cost-intensive, the retention space is often replaced by a simple sewer with storage capacity. With the AQUATUB-Rw storm water sewer pipe laid in single or multiple, mainly parallel strands adequate storage capacity can be achieved.

### The raw material

Compared to other common thermoplastic materials (PP and PVC), PE-HD offers an excellent impact resistance by which the AQUATUB-Rw storm sewer pipe is provided with a high reliability against damage in tough construction site conditions or repeated use.

Neither of the pipe sizes showed any damage in the pipe's inner surface in an impact test in accordance with DIN E N 1411, even with a test load of 12.5 kg from a falling height of 2.0 m at -20 °C.

### Supplementary components

The combination with HEGLER fittings and MULTI-inspect chamber systems allows individual laying arrangements with the largest possible retention volume, making use of the available space.

Thanks to the low weight of AQUATUB-Rw twin wall pipes fast and thus low-cost installation as well as reliable stability for use in SLW 60 classified roads is guaranteed. For optimized installation arrangements, project-specific structural analyses, or any other technical advice on the design, our specialist consultants may be contacted at any time during the planning phase.

### Advantages of AQUATUB-Rw system:

- Pipe system/storage capacity relating to inside diameter
- Easy handling – fast installation
- Durable, robust material, PE-HD, allowing construction in winter
- Special fittings for inlet/outlet and special connections
- High ring stiffness of  $S \geq 8.0 \text{ kN/m}^2$  for SLW 60 classified roads

Nominal size (DN)	Inside diameter (mm)	Outside diameter (mm)	Storage capacity (m <sup>3</sup> /m)
500	498.0	579.5	0.195
600	594.0	691.9	0.277
800	791.0	919.3	0.493

# HEGLER

Well- und Verbundrohre aus Kunststoff

